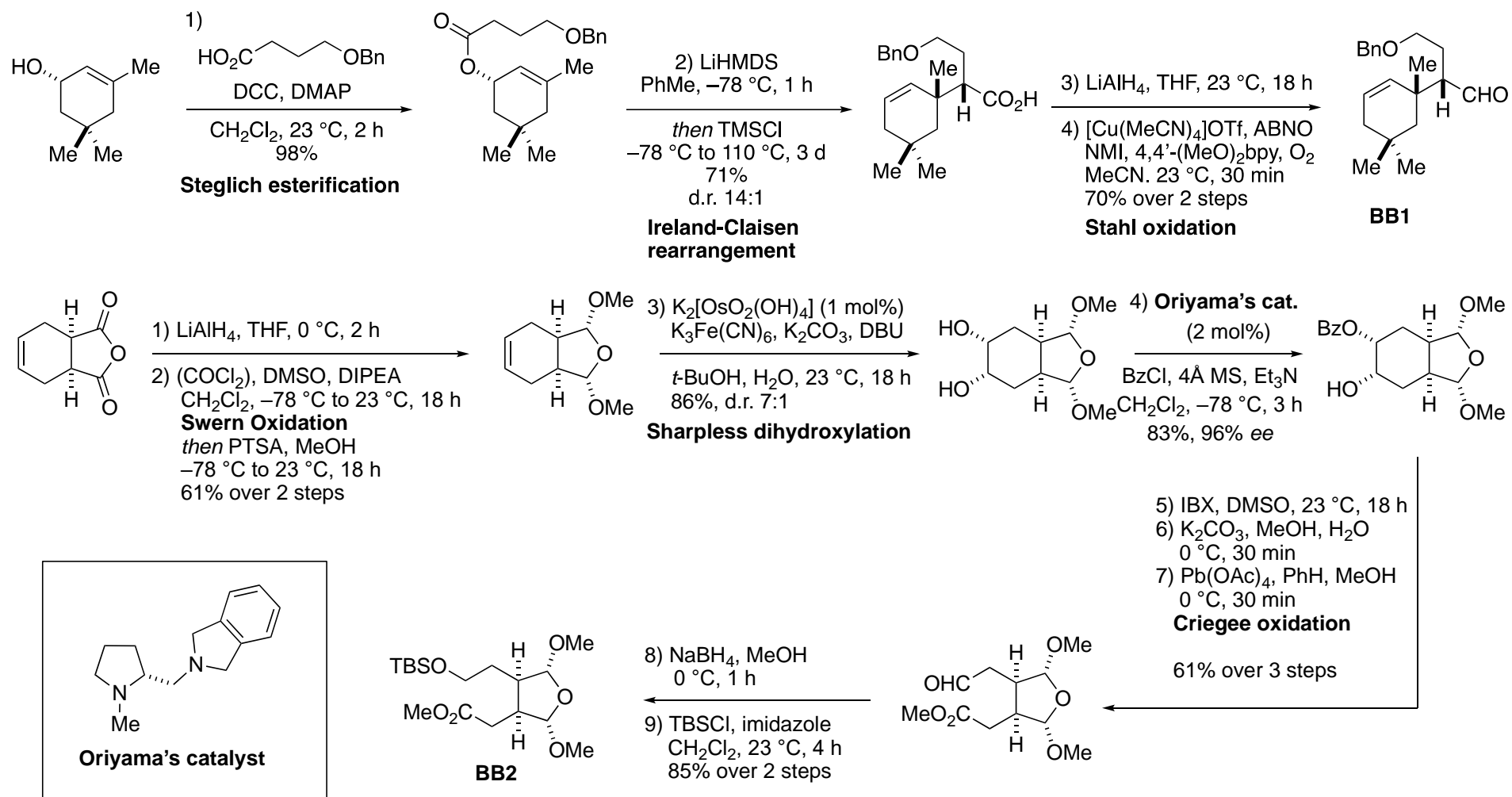
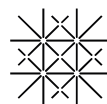
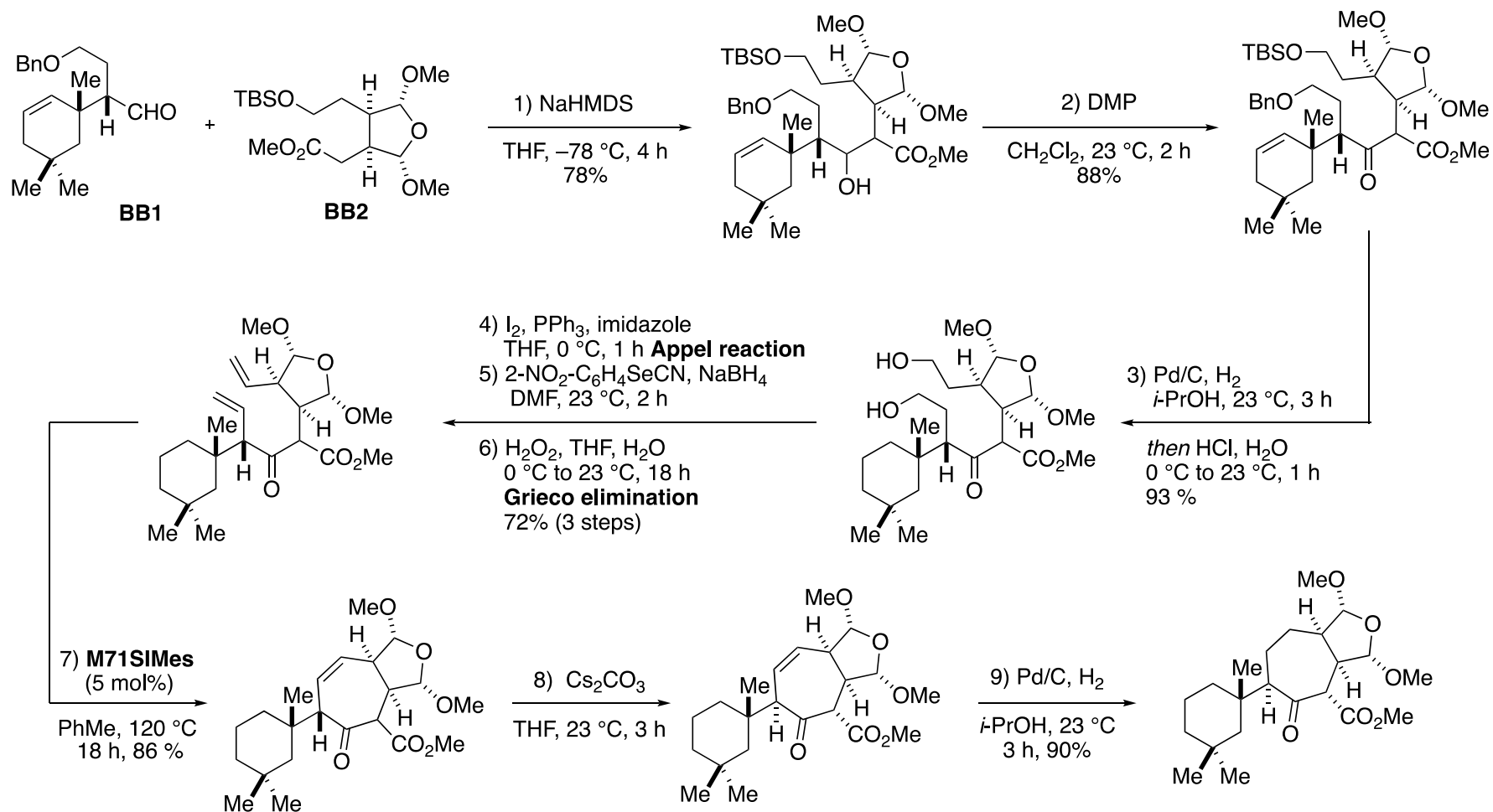


# E121: Total Synthesis of (+)-Darwinolide



# E121: Total Synthesis of (+)-Darwinolide

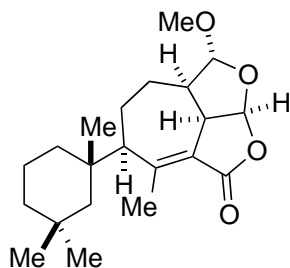


# E121: Total Synthesis of (+)-Darwinolide

10)  $\text{Tf}_2\text{O}$ , NaHMDS  
 $\text{Et}_2\text{O}$ ,  $-78^\circ\text{C}$ , 30 min

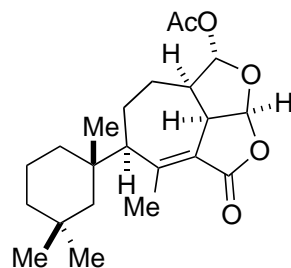
11)  $\text{Pd}_2(\text{dba})_3$ , XPhos,  
DABCO-( $\text{AlMe}_3$ )  
THF,  $65^\circ\text{C}$ , 30 h  
40% (2 steps)

**Woodward methylation**



12) AcOH,  $\text{Ac}_2\text{O}$   
 $\text{H}_2\text{SO}_4$

$\text{CH}_2\text{Cl}_2$ ,  $0^\circ\text{C}$   
10 min  
44%



**(+)-darwinolide**

