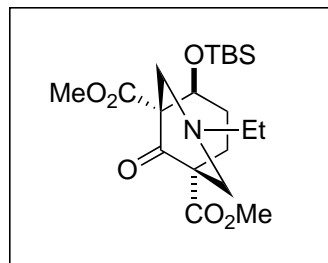
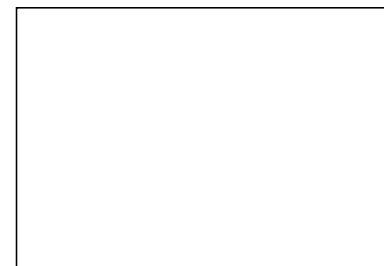


- 1)
- 2)
- 3)
- 4)
- 5)
- 6)
- 7)



- 8) **1**, EtMgBr
- 9) **2**, NaH
- 10) V-40, *n*-Bu₃SnH
- 11) H₂, Pd/C



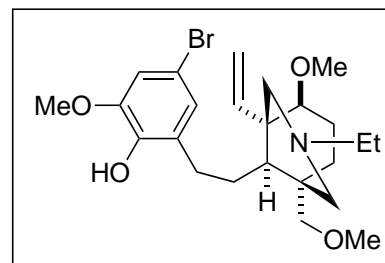
- 12) DIBAL (2 equiv.)
- 13) NaN(TMS)₂, MeI
- 14) *n*-Bu₄NF
- 15) NaH, MeI



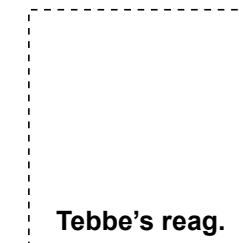
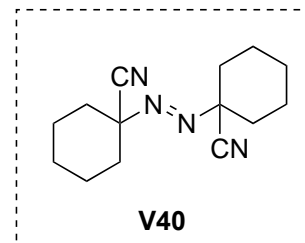
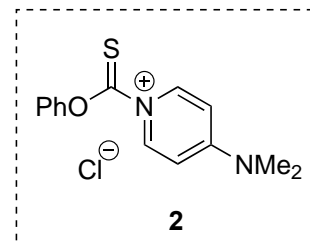
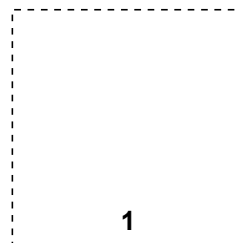
+ (1:2.2)

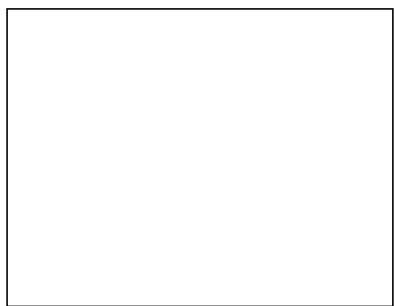


- 21) HCl, PhI(OAc)₂, MeOH, methyl red
- 22) PhMe, reflux

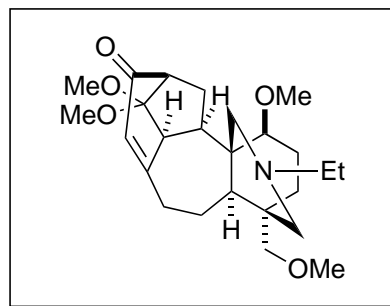


- 16)
- 17)
- 18) Tebbe's reagent
- 19)
- 20) then

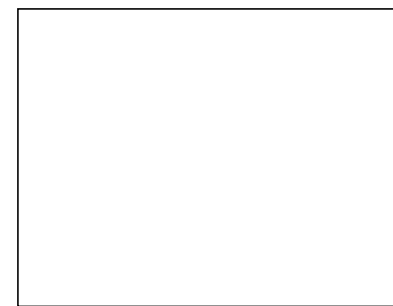




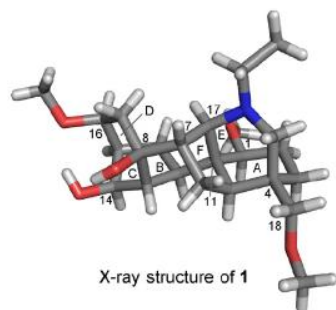
23) Ph_3SnH , AIBN
24) DIBAL
25) Tf_2O
26) DBU, DMSO



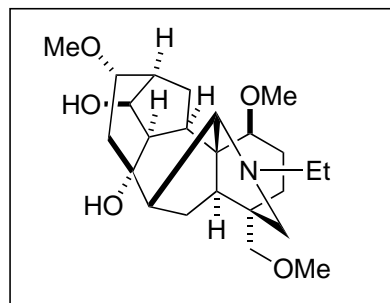
27)
28)
29) *then*
30)



31) $\text{NaN}(\text{TMS})_2$, MeI
32)
33)



X-ray structure of 1



talatisamine

34) $\text{Hg}(\text{OAc})_2$, AcOH
35) 1,4-dioxane, H_2O , 90 °C

