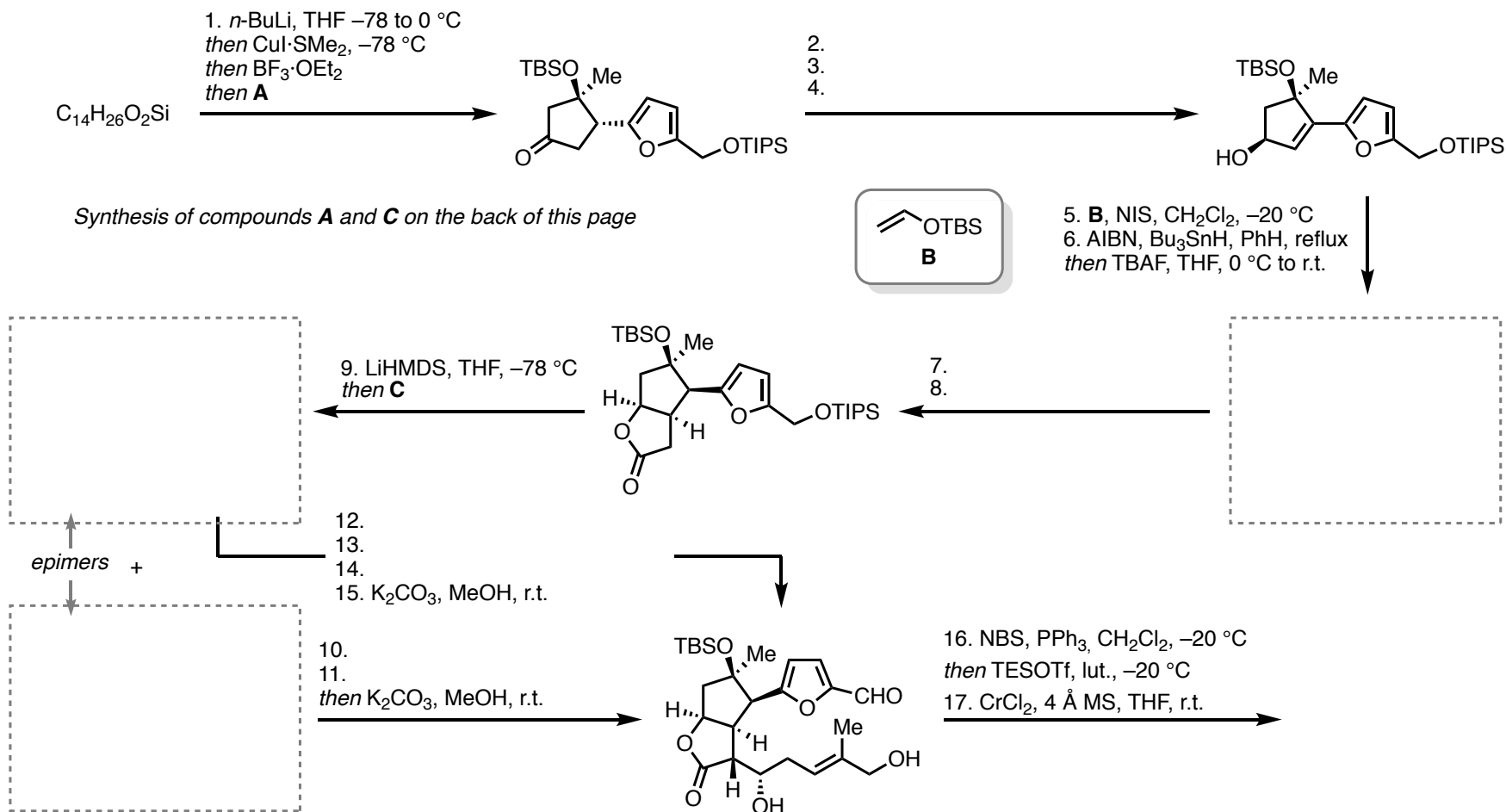
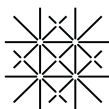


# E192: (–)-Sinulochmodin C and (+)-Ineleganolide

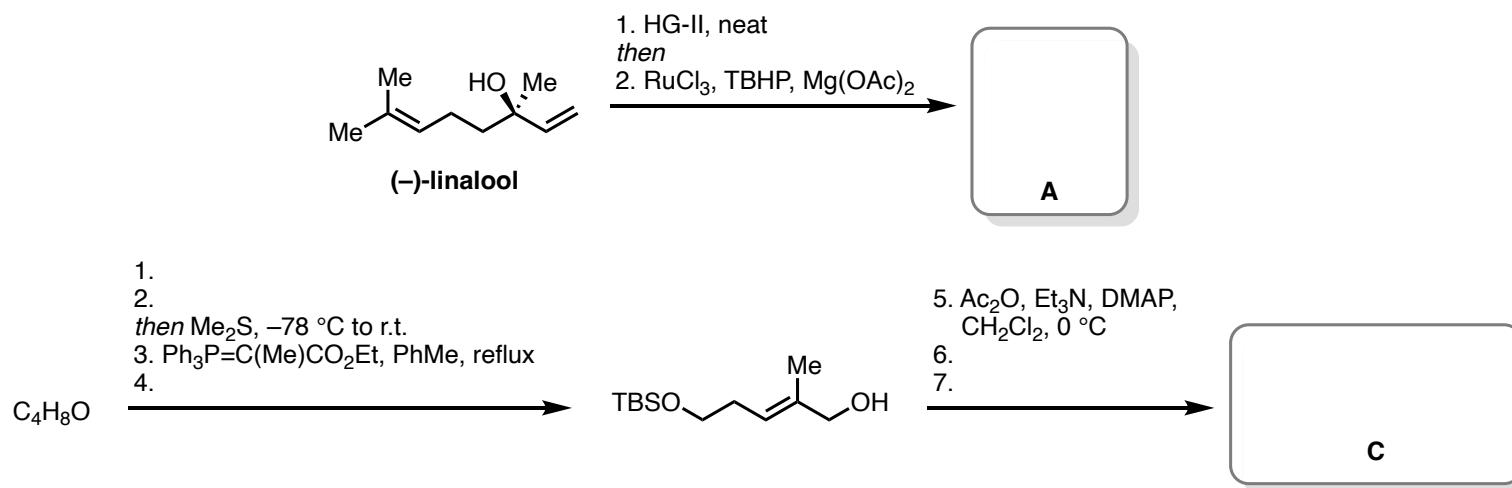
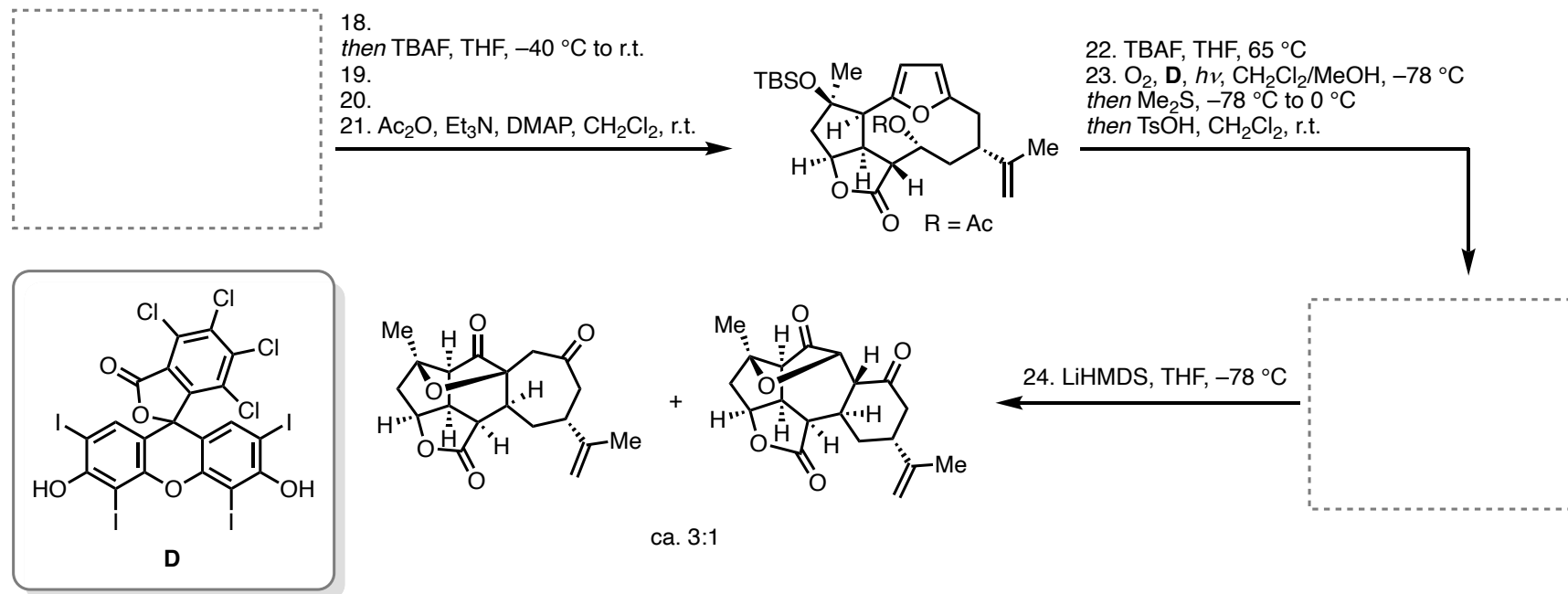


[1] J. P. Tuccinardi, J. L. Wood, *J. Am. Chem. Soc.* **2022**, doi: 10.1021/jacs.2c09826. [2] J. E. Baldwin, P. G. Bulger, R. Marquez, *Tetrahedron* **2002**, 58, 5441–5452. [3] Z. G. Brill, H. K. Grover, T. J. Maimone, *Science* **2016**, 352, 1078–1082.

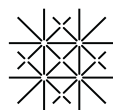


University of Basel

Sparr Group Seminar  
 02.11.2022  
 Tanno Schmidt



[1] J. P. Tuccinardi, J. L. Wood, *J. Am. Chem. Soc.* **2022**, doi: 10.1021/jacs.2c09826. [2] J. E. Baldwin, P. G. Bulger, R. Marquez, *Tetrahedron* **2002**, *58*, 5441–5452. [3] Z. G. Brill, H. K. Grover, T. J. Maimone, *Science* **2016**, *352*, 1078–1082.



University  
of Basel

Sparr Group Seminar  
 02.11.2022  
 Tanno Schmidt