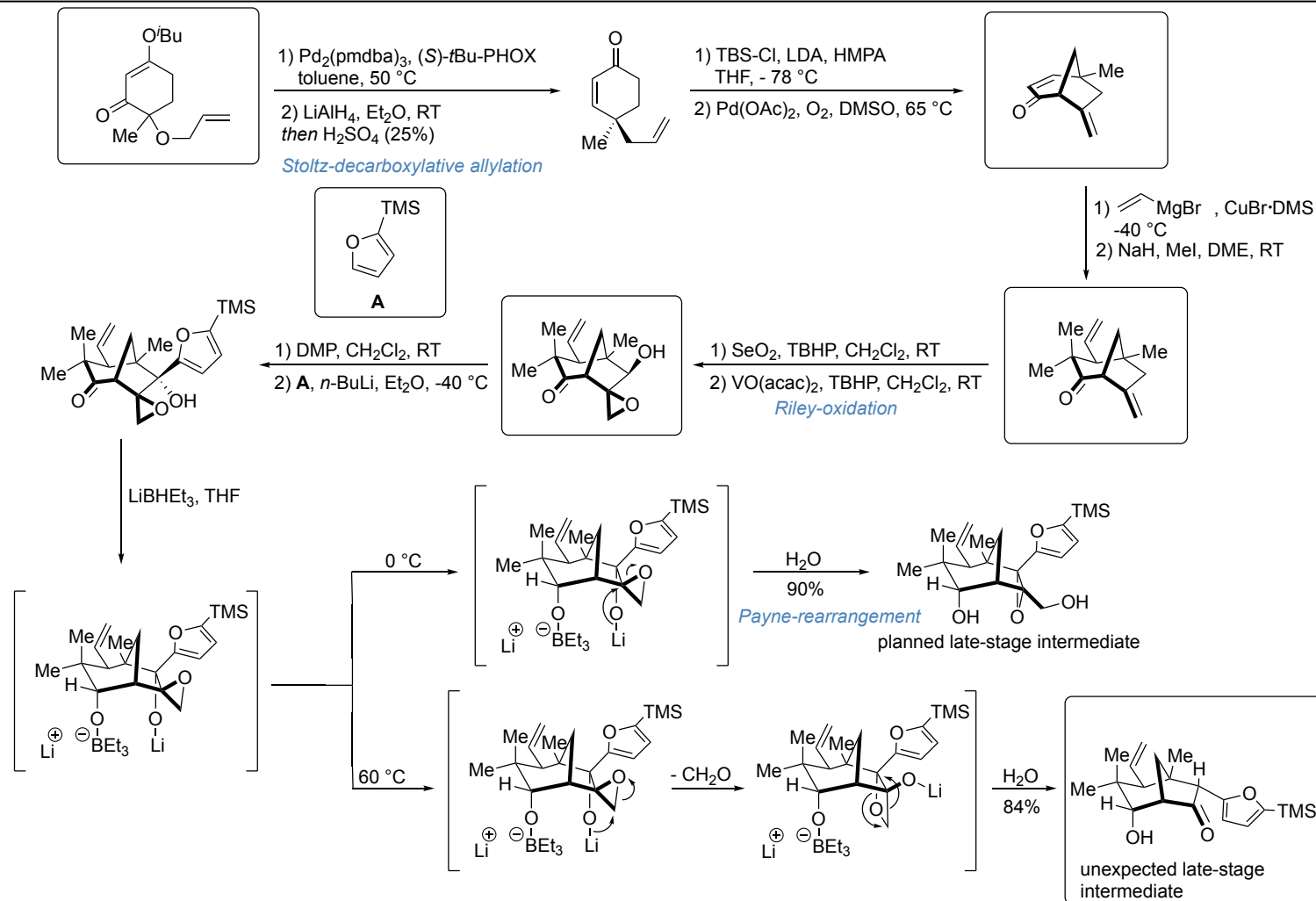
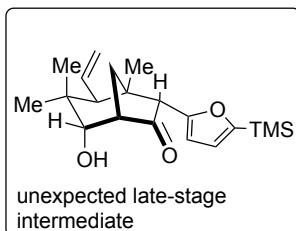
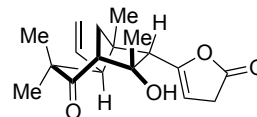


# E34: Total Synthesis of (-)-Pallavicinin and (+)-Neopallavicinin





- 1) DMP, CH<sub>2</sub>Cl<sub>2</sub>, RT
- 2) MeMgBr, THF, -40 °C
- 3) *m*-CPBA, CH<sub>2</sub>Cl<sub>2</sub>, RT



- 1) DBU, CH<sub>2</sub>Cl<sub>2</sub>, RT
- 2) LDA, CH<sub>3</sub>CHO, THF, -78 °C
- 3) MsCl, Et<sub>3</sub>N, DMAP, CH<sub>2</sub>Cl<sub>2</sub>

