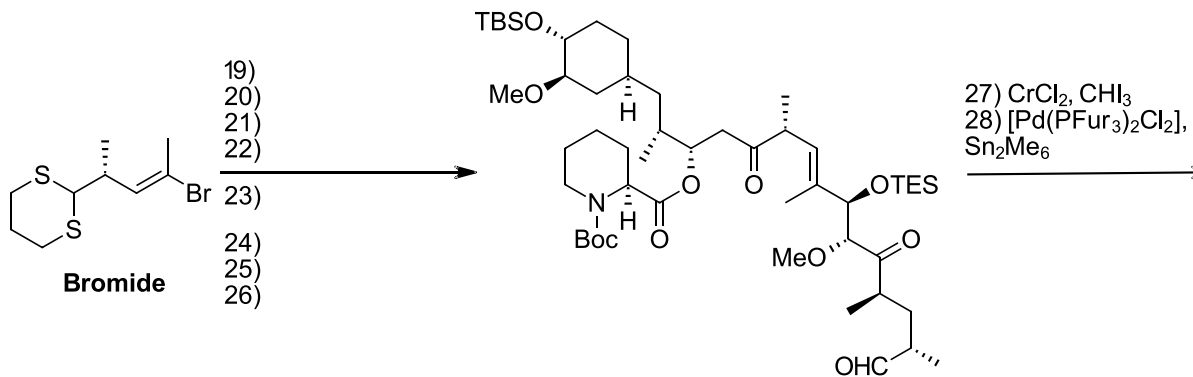
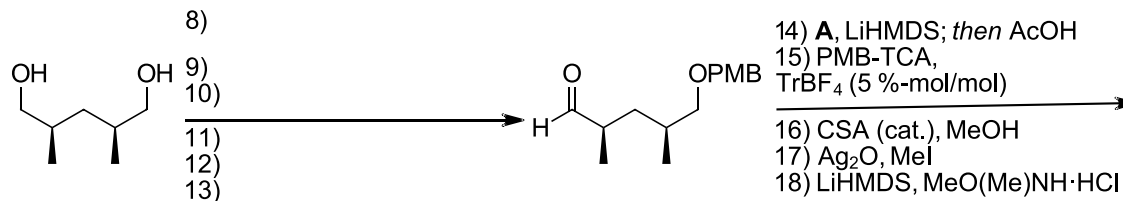
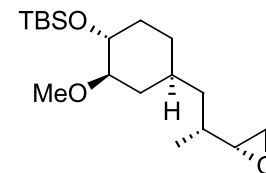
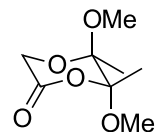
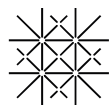


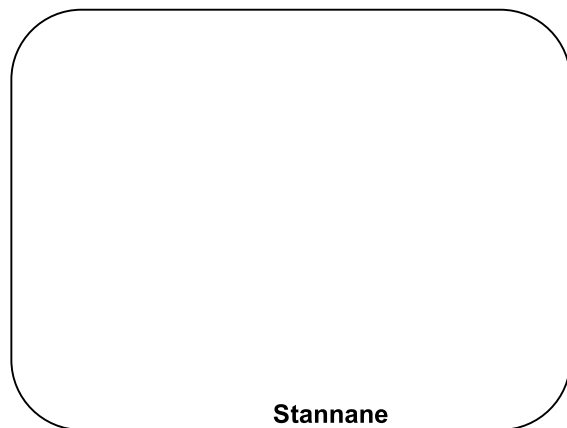
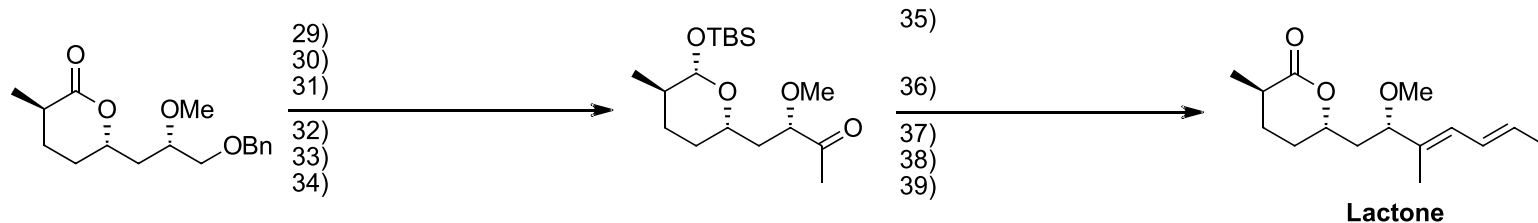
# E96: (-)-Rapamycin



19)-26) Use **Electrophile** and **B**



# E96: (-)-Rapamycin



- 40)  $[\text{Pd}(\text{PFur}_3)_2\text{Cl}_2]$ , **Lactone**  
41)  $\text{LiAlH}(\text{OtBu})_3$   
42) Alloc-Cl, 4-pyrrolidinopyridine  
43) 0.1 M aq. LiOH  
44) TESOTf, 2,6-lut  
45)  $\text{BrCH}_2\text{COBr}$ , 2,6-lut

